



RASU
ROSATOM



RASU JSC in Hanhikivi-1 Project

Hanhikivi-1 Business Day 2021
Nikolai Shaulov
Director of RASU JSC Branch in Finland

RASU is responsible for I&C on the main NPP projects

OUR SERVICES

We support our clients throughout the whole lifecycle of a facility or a product

front-end engineering
and design

design

fundraising

construction
management

assessment of technical
state

development of special
systems and equipment

full-scope supply

maintenance and service



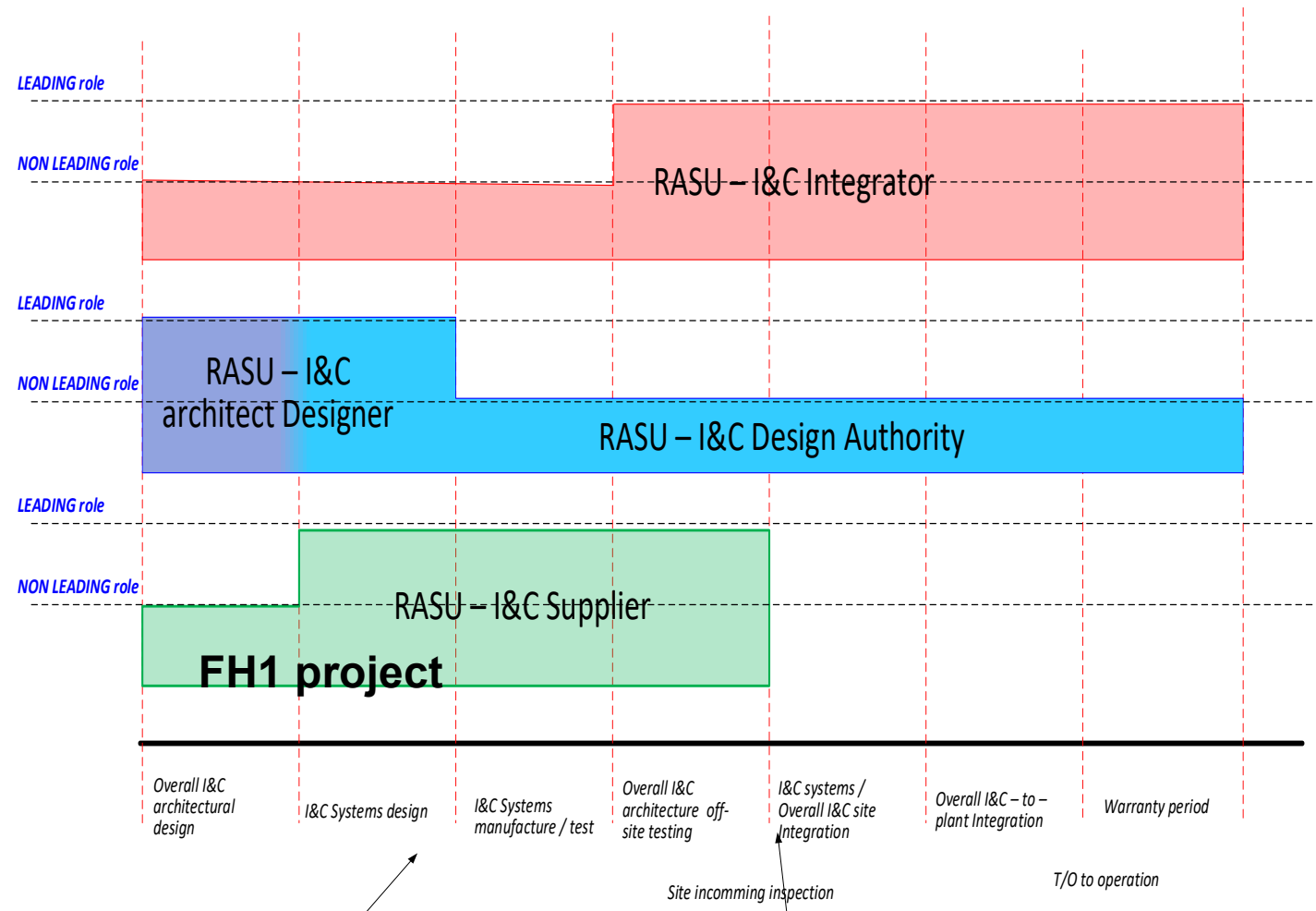
RASU performs three roles on Hanhikivi-1 Project

1. I&C Integrator
2. I&C Designer*
3. I&C Overall Supplier

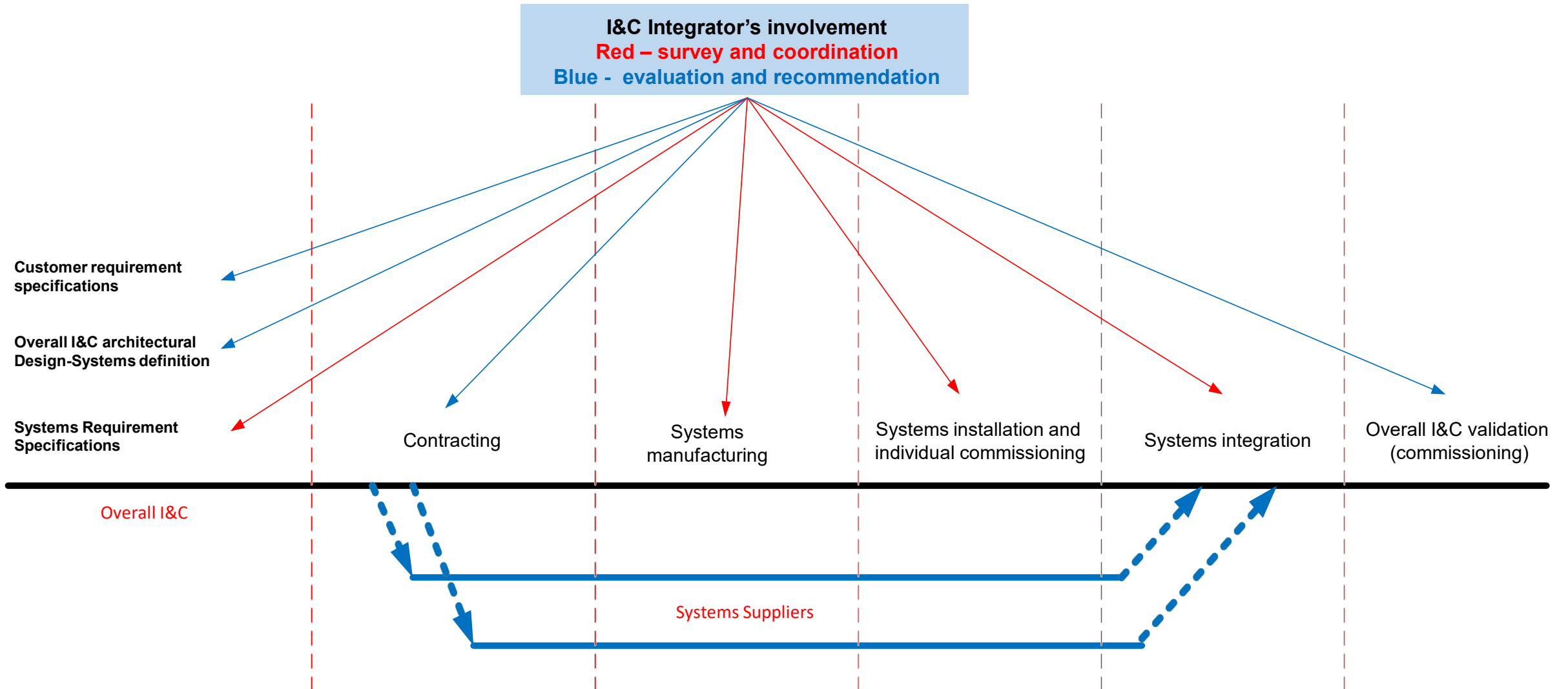


*continued into ICS-07+ as I&C Design Authority

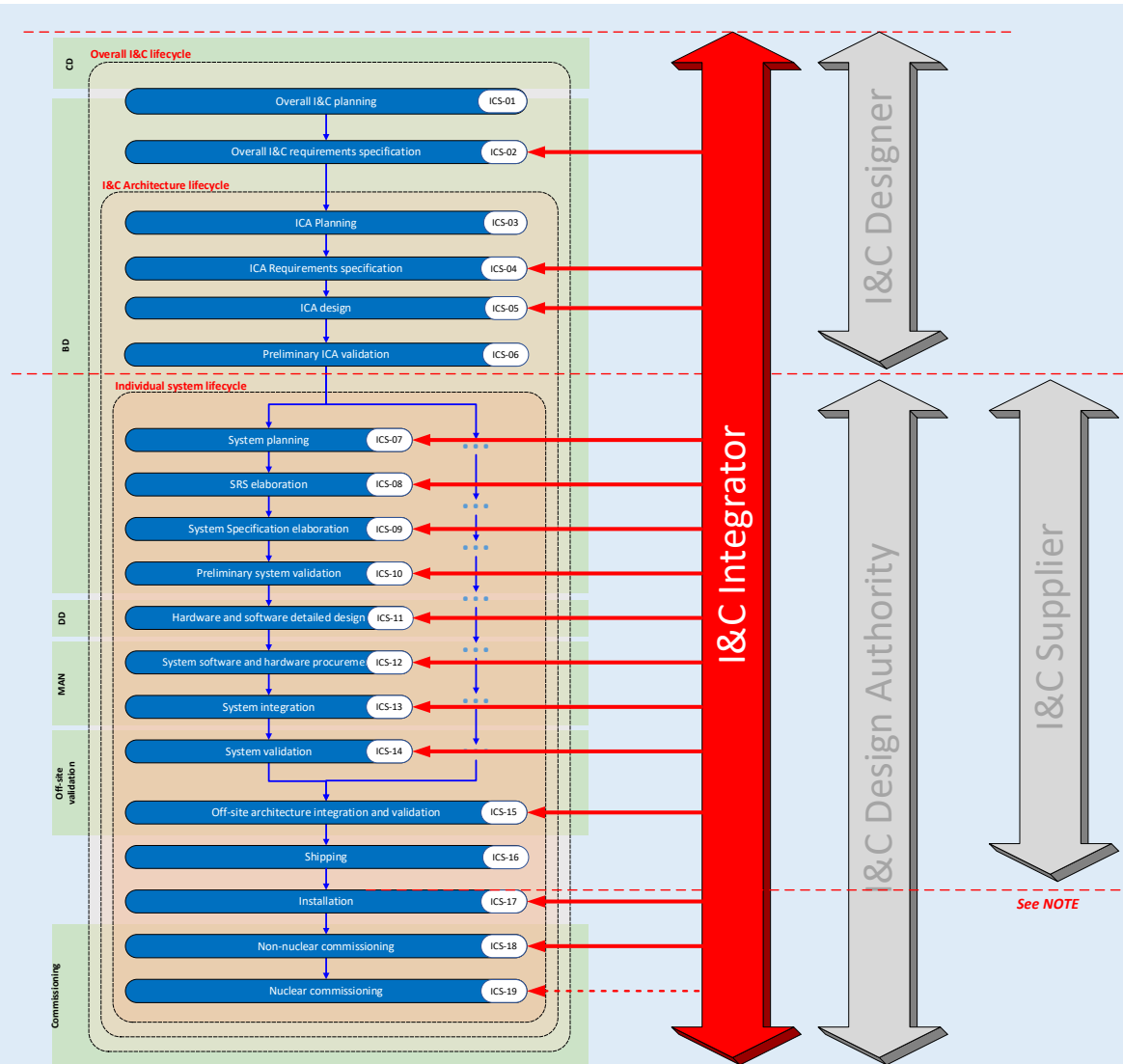
FH1 project SPECIFICS for I&C



I&C Integrator involvement / project phases



I&C Integrator involvement / I&C Lifecycle stages



- The figure is showing where the I&C integrator shall get involved to ensure the feasibility of the selected solutions – compatibility with the market possibilities
- Ensure the implementation of the compatibility requirements
- Ensure / coordinate the integration of the systems
- Ensure the “certification” of the outcome (commissioning tests, validations, etc)

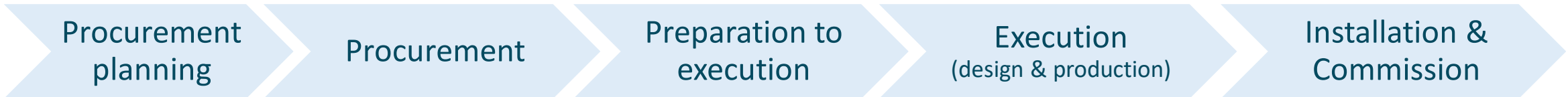
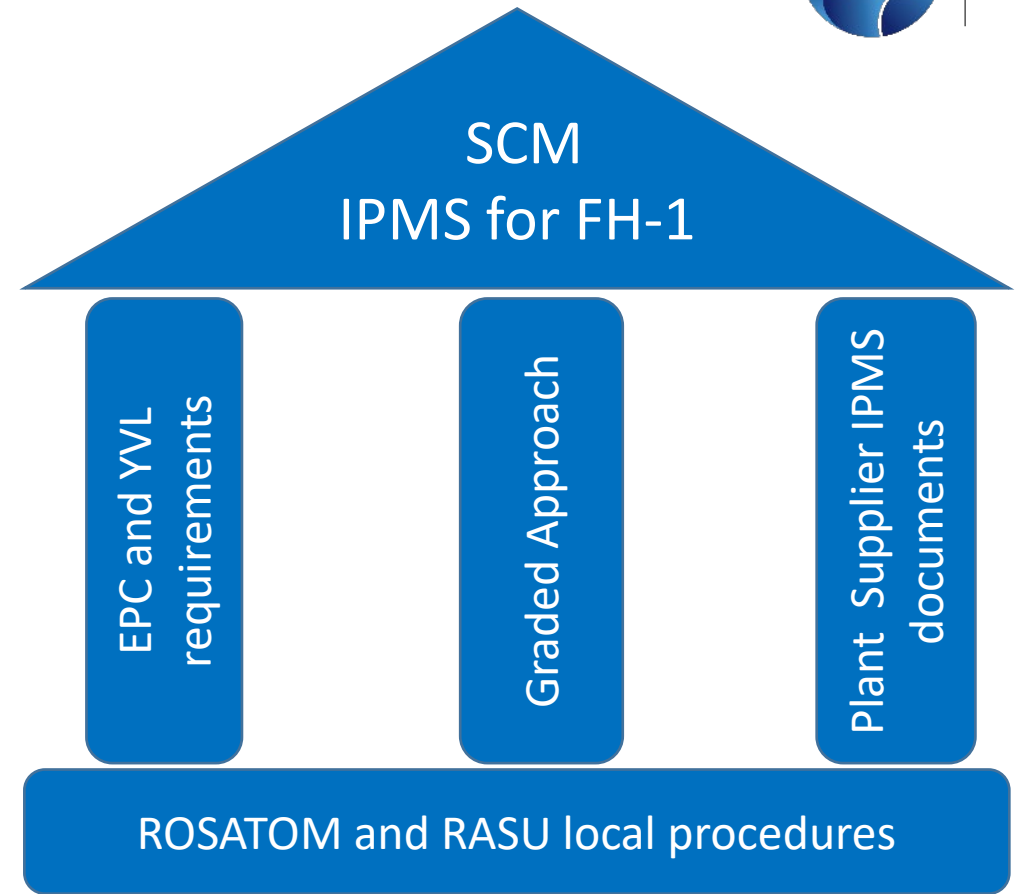
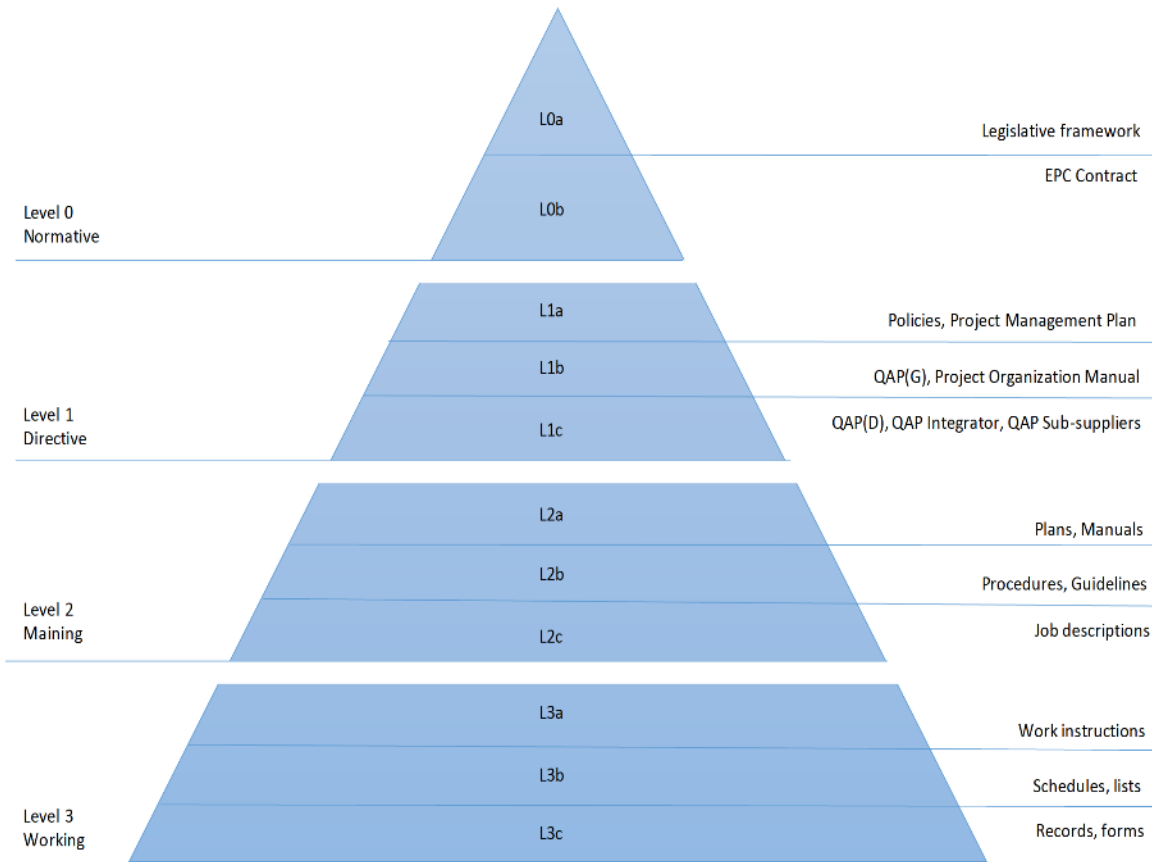


RASU as Overall I&C supplier

Supply chain management



RASU
ROSATOM



Current collaboration of RASU Branch in Finland with Finnish companies

RASU Branch in Finland

Engineering, procurement of IC systems

Enersense International Oy

Assystem, Branch in Finland

Support operational services

Telia Oy

Mehilainen Oy

Technopolis Oy

Verkkokauppa Oy

Planned support services

Personnel training services

OHSE service

Audit services

3rd party inspection (I&C)

Transportation and logistics



Current



Planned